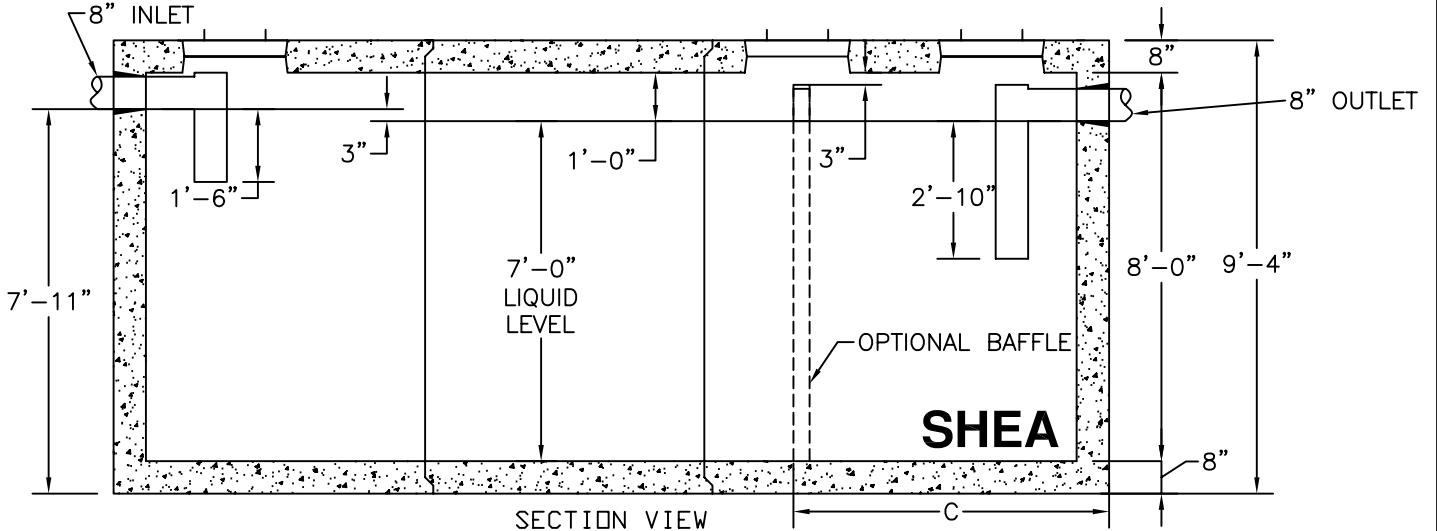


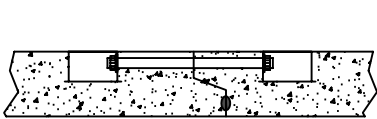
PLAN VIEW



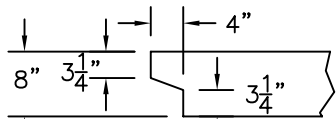
SECTION VIEW

NOTES:

1. CONCRETE: 5,000 PSI MINIMUM AFTER 28 DAYS.
2. DESIGN CONFORMS WITH 310 CMR 15.00, DEP TITLE 5 REGS, FOR SEPTIC TANKS.
3. ALL REINFORCEMENT PER ASTM A-615
4. DESIGNED H-20 LOADING, 2 TO 5 FEET COVER.
5. TEES AND BAFFLES SOLD SEPARATELY.
6. TONGUE AND GROOVE JOINT SEALED WITH BUTYL RESIN AND BOLTED WITH 3/4" DIA BOLTS.



TYPICAL BOLT CONNECTION



TYPICAL JOINT DETAIL

GALLONS	A (LENGTH)	B (LENGTH)	C (BAFFLE)	WEIGHT
13,000	26'-3"	24'-11"	9'-0"	103,950#
14,000	28'-2"	26'-10"	9'-0"	110,386#
15,000	30'-1"	28'-9"	9'-8"	116,822#
16,000	32'-0"	30'-8"	10'-8"	123,258#
17,000	33'-11"	32'-7"	10'-11"	129,694#
18,000	35'-10"	34'-6"	11'-7"	136,130#
19,000	37'-9"	36'-5"	12'-2"	142,566#
20,000	39'-8"	38'-4"	12'-10"	149,002#
21,000	41'-7"	40'-7"	13'-5"	155,438#
22,000	43'-6"	42'-2"	14'-1"	161,874#
23,000	45'-5"	44'-1"	14'-4"	168,310#
24,000	47'-4"	46'-0"	14'-4"	174,746#

**E.F. SHEA**  
**NEW ENGLAND**  
**CONCRETE PRODUCTS, INC.**

COMMERCIAL LINE TANK  
 13,000 TO 24,000 GALLON  
 OTHER SIZES AVAILABLE